



THE PLACE, NEWPORT

A safe, inclusive civic space

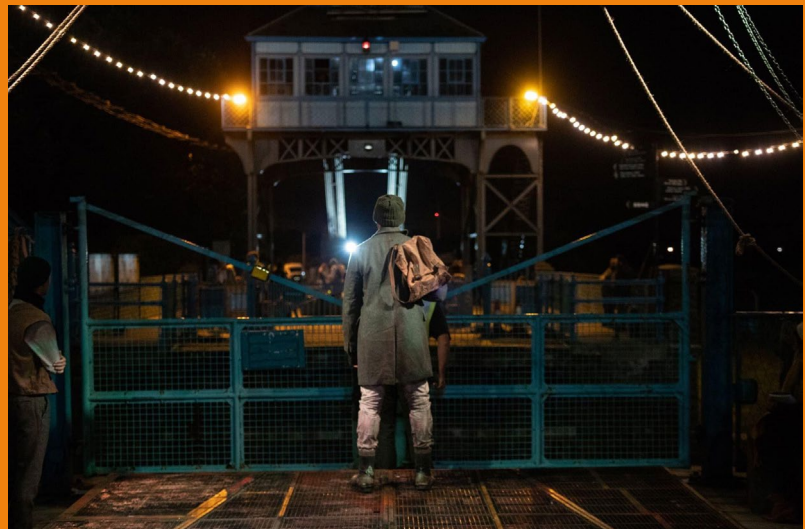
ABOUT US

Tin Shed Theatre CIC is a civic arts organisation championing co-creative methodology in cohesive arts practice with communities and professionals. The organisation specialises in outdoor and site specific theatrical events whilst redeveloping unconventional spaces as long standing cultural hubs.

The company boasts a number of long standing engagement programmes seeking to deconstruct the barriers to creative expression, they continue to work internationally, sharing their theatrical artistry and engagement practice.

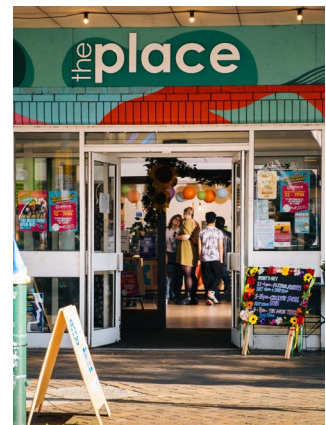
TSTC are pioneers in Wales for creating their cultural ecosystem of 'The Place, Newport' a 3rd space for societal regeneration, civic currency and community cohesion.

The origins of the company are born from the city itself, through collaboration and co-creation with local people, that now form the company's core team, TSTC has worked for 14 years to lead the way in harnessing the power of arts and creativity as a vehicle to develop long lasting relationships, highlight social injustice and create new pathways for those who feel disconnected from arts provision or the institutions that typically house it.



In 14 years the organisation has (and continues to):

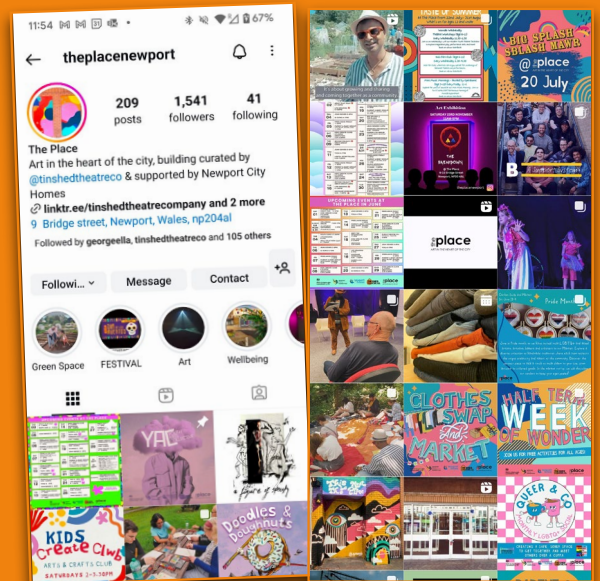
- Engaged with local and international audiences.
- Successfully co-developed 8 empty city centre buildings for social and cultural connectivity; driving change for the future. (See business plan page 20-21)
- Co-created, developed and sustained long standing community focused creative strands aimed at marginalised communities, in particular those disenfranchised from a sense of local and societal power and influence.
- Developed programmes specifically aligned to support young people to build their own creative lives and to use arts and creativity to influence the world around them to access employment opportunities, further creative pathways and contribute to the board of trustees. (YAC Youth Arts Collective, Hatch Youth Theatre, The Public Theatre Co & The Future Generations Forum)
- In the last 12 months; employed and sustained 15 local people as core staff & regular freelancers.
- Provided regular volunteer opportunities to 25 people.
- Been instrumental in Newport City Council's work on the developing cultural strategy and placemaking strategy for the city of Newport, with TSTC staff and community members invited to sit alongside key stakeholders on the local authority steering panels.
- Played a key role in developing and delivering a number of local initiatives in creative consultancy for local housing association stakeholders to hold safe space for communities.
- Creative Director George Harris has spoken internationally to champion the company's work in placemaking and creative development in talks; Missing Pillars with British Council, Outdoor Arts 101 Producer Toolkit and more, highlighting the impactful work of the organisation to a global audience.
- Worked intensively with local communities across Newport to create a cultural workforce that is more reflective of our society, by enabling more people to progress in their career in the arts who identify as D/deaf, disabled or neurodivergent, are from communities experiencing racial inequity, or who are economically disadvantaged.



CONNECTING WITH OUR AUDIENCE



1200 copies of our programme of activities and events, the most recent can be found here







 click the icons to visit our social

799
WORKSHOPS
DELIVERED

8865
COMMUNITY PARTICIPANTS
ENGAGED

6339
FOOTFALL
INTO THE PLACE

122
GROUPS AND ORGANISATIONS
COLLABORATED WITH

3267
AUDIENCE
MEMBERS

291
FREELANCE
PAID ARTISTS

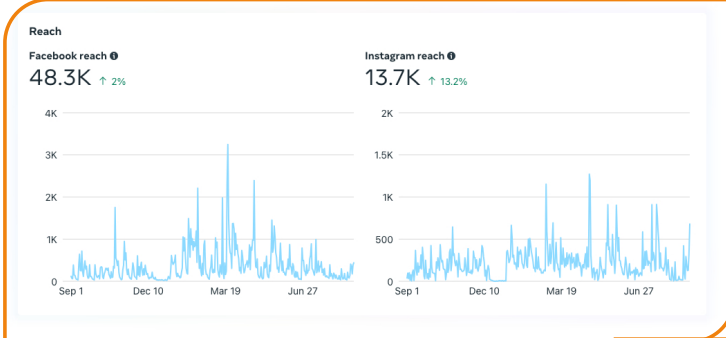
77
LIVE PERFORMANCES
& EVENTS

47
CREATIVE TRAINING
& RESIDENCIES

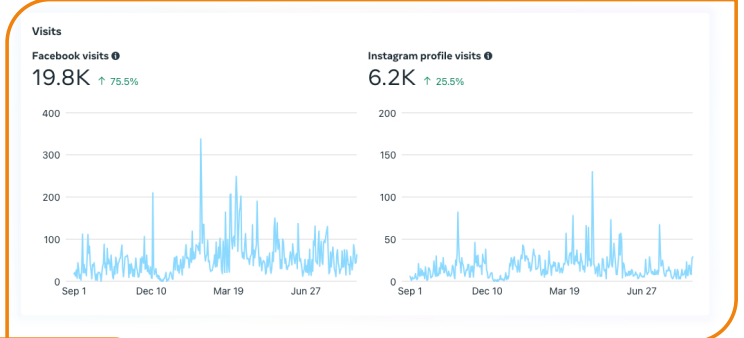


DIGITAL ENGAGEMENT

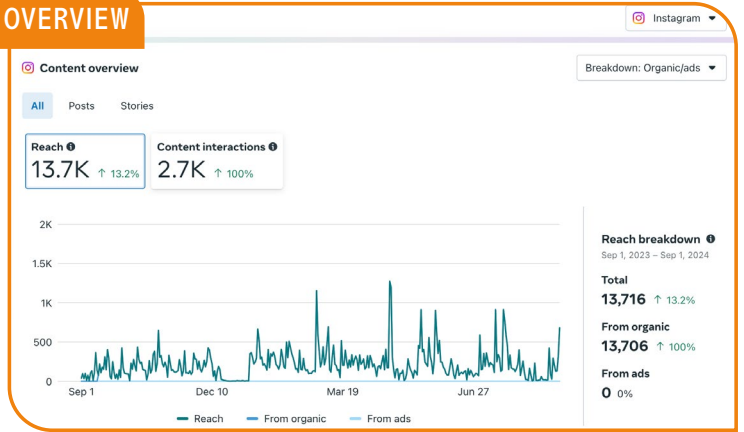
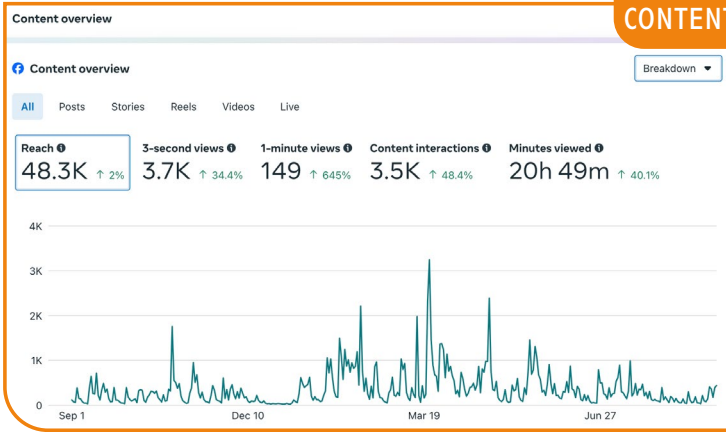
REACH



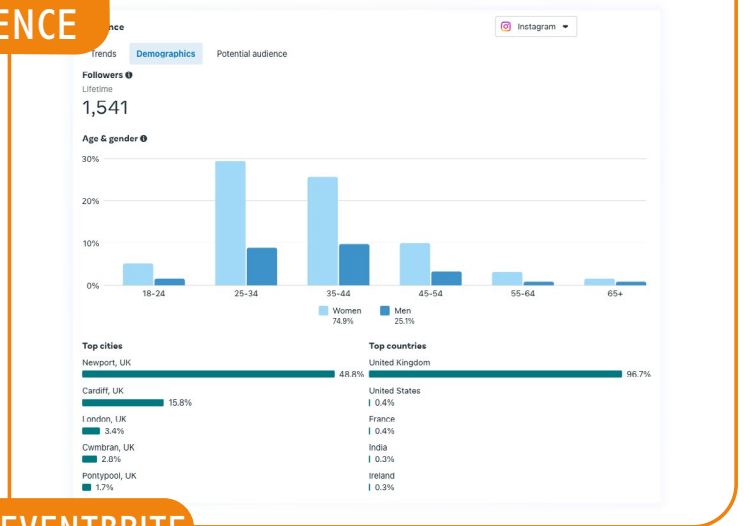
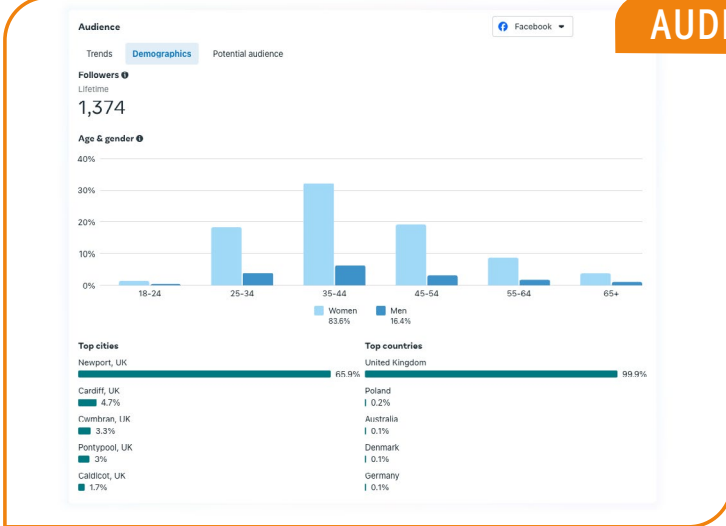
VISITS



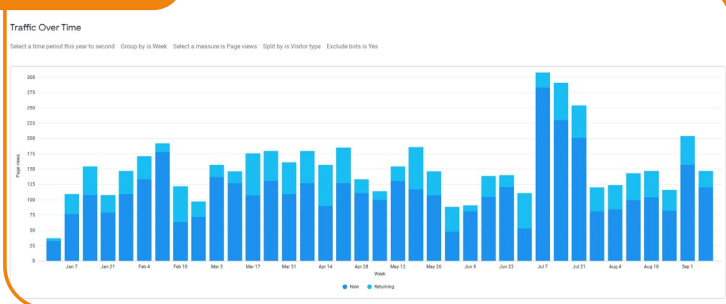
CONTENT OVERVIEW



AUDIENCE



WEBSITE



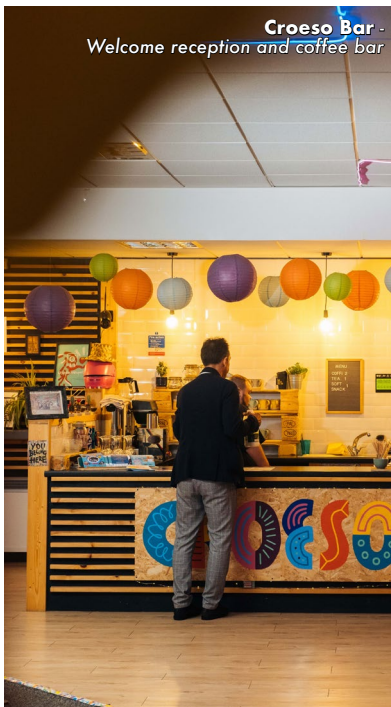
EVENTBRITE



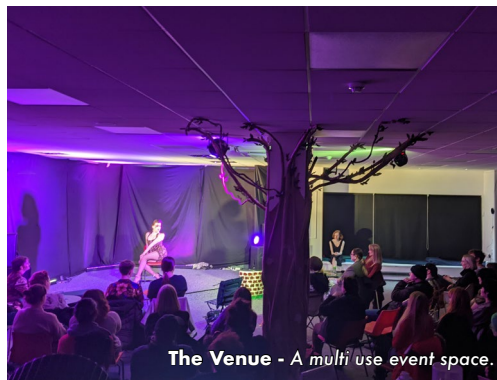
THE SPACE



The Living Room - an open space for social connection.



Croeso Bar -
Welcome reception and coffee bar



The Venue - A multi use event space.



Wellbeing and Multifaith room



Green room

PARTNERS, FUNDERS, STAKEHOLDERS



Llywodraeth Cymru
Welsh Government



Funded by
UK Government